



Vector NTI Import Plugin

USER MANUAL

User manual for Vector NTI Import 20.0

Windows, macOS and Linux

December 5, 2019

This software is for research purposes only.

QIAGEN Aarhus
Silkeborgvej 2
Prismet
DK-8000 Aarhus C
Denmark



Contents

1 Introduction	4
1.1 Import from the Vector NTI Local Database	4
1.2 Importing single files	6
2 Install and uninstall plugins	7
2.1 Install	7
2.2 Uninstall	8

Chapter 1

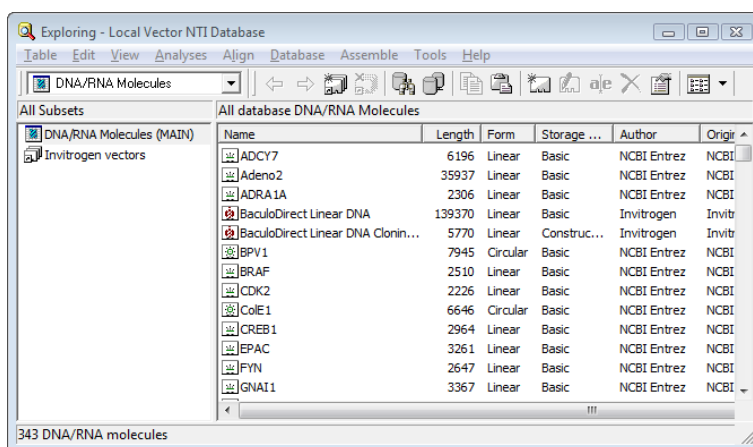
Introduction

There are several ways of importing your Vector NTI data into the CLC Workbench. The best way to go depends on how your data is currently stored in Vector NTI:

- Your data is stored in the Vector NTI Local Database which can be accessed through Vector NTI Explorer.
- Your data is stored as single files on your computer (just like Word documents etc.).

1.1 Import from the Vector NTI Local Database

If your Vector NTI data are stored in a Vector NTI Local Database (as the one shown in figure 1.1), you can import all the data in one step, or you can import selected parts of it.



The screenshot shows the 'Exploring - Local Vector NTI Database' window. The main area displays a table of 'All database DNA/RNA Molecules'. The table has columns for Name, Length, Form, Storage, Author, and Origin. The status bar at the bottom indicates '343 DNA/RNA molecules'.

Name	Length	Form	Storage ...	Author	Origin
ADCY7	6196	Linear	Basic	NCBI Entrez	NCBI
Adeno2	35937	Linear	Basic	NCBI Entrez	NCBI
ADRA1A	2306	Linear	Basic	NCBI Entrez	NCBI
BaculoDirect Linear DNA	139370	Linear	Basic	Invitrogen	Invitrogen
BaculoDirect Linear DNA Clonin...	5770	Linear	Construc...	Invitrogen	Invitrogen
BPV1	7945	Circular	Basic	NCBI Entrez	NCBI
BRAF	2510	Linear	Basic	NCBI Entrez	NCBI
CDK2	2226	Linear	Basic	NCBI Entrez	NCBI
ColE1	6646	Circular	Basic	NCBI Entrez	NCBI
CREB1	2964	Linear	Basic	NCBI Entrez	NCBI
EPAC	3261	Linear	Basic	NCBI Entrez	NCBI
FYN	2647	Linear	Basic	NCBI Entrez	NCBI
GNAI1	3367	Linear	Basic	NCBI Entrez	NCBI

Figure 1.1: Data stored in the Vector NTI Local Database accessed through Vector NTI Explorer.

Importing the entire database in one step From the Workbench, there is a direct import of the whole database (see figure 1.2):

File | Import | Import Vector NTI Database (🌐)

This will bring up a dialog letting you choose to import from the default location of the database, or you can specify another location. If the database is installed in the default folder, like e.g.

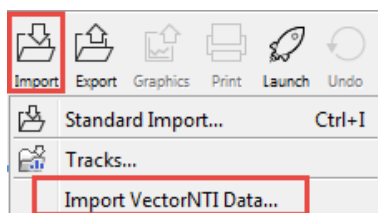


Figure 1.2: Import the whole Vector NTI.

C:\VNTI Database, press **Yes**. If not, click **No** and specify the database folder manually.

When the import has finished, the data will be listed in the **Navigation Area** of the Workbench as shown in figure 1.3.

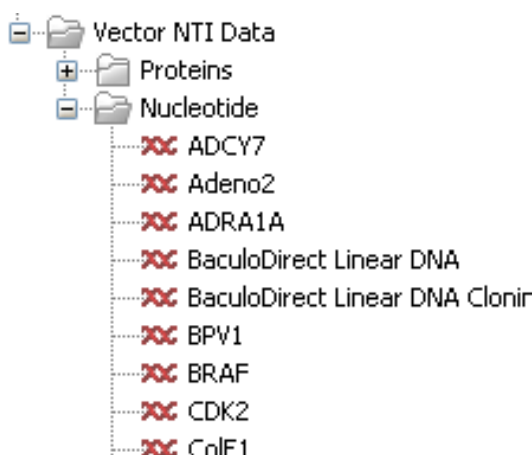


Figure 1.3: The Vector NTI Data folder containing all imported sequences of the Vector NTI Database.

If something goes wrong during the import process, please report the problem to ts-bioinformatics@qiagen.com. To circumvent the problem, see the following section on how to import parts of the database. It will take a few more steps, but you will most likely be able to import this way.

Importing parts of the database Instead of importing the whole database automatically, you can export parts of the database from Vector NTI Explorer and subsequently import into the Workbench. First, export a selection of files as an archive as shown in figure 1.4.

This will produce a file with a ma4-, pa4- or oa4-extension. Back in the CLC Workbench, click **Import** (📁) | **Import Vector NTI Database** and select the file.

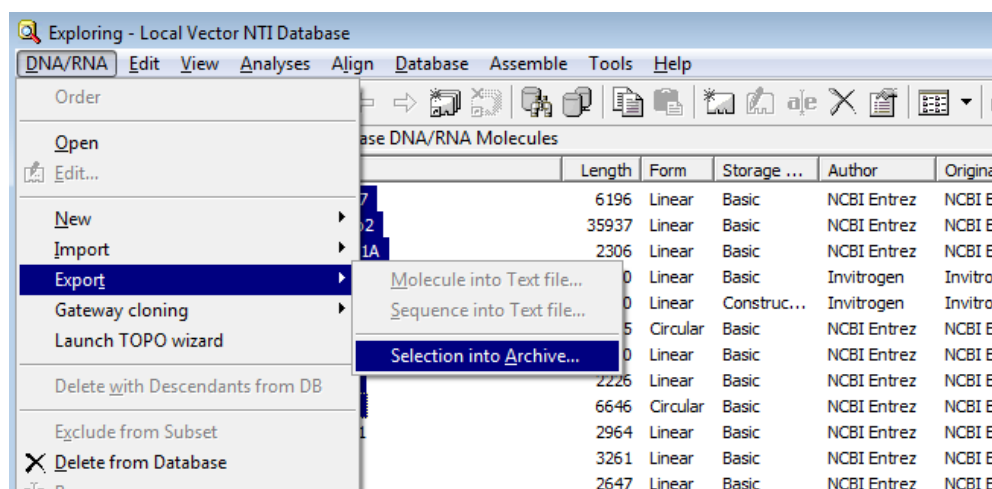


Figure 1.4: Select the relevant files and export them as an archive through the File menu.

1.2 Importing single files

In Vector NTI, you can save a sequence in a file instead of in the database (see figure 1.5).

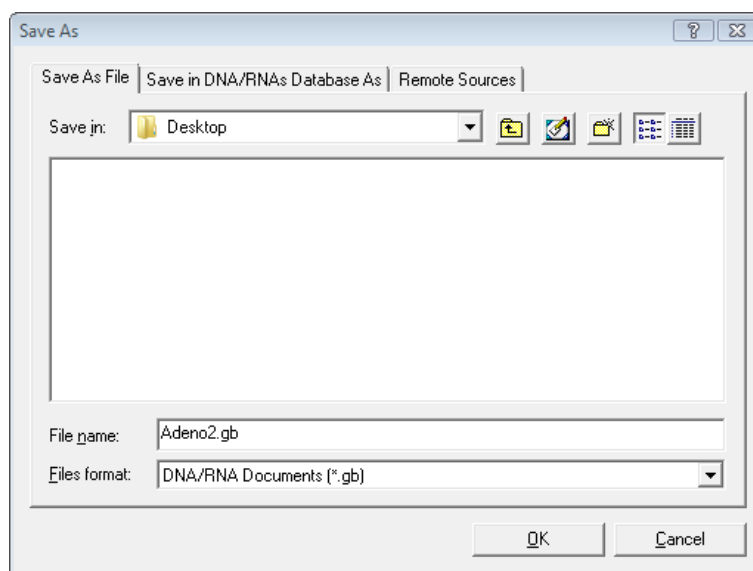


Figure 1.5: Saving a sequence as a file in Vector NTI.

This will give you file with a .gb extension. This file can be easily imported into the CLC Workbench:

Import (📁) | Standard Import

You don't have to import one file at a time. You can simply select a bunch of files or an entire folder, and the CLC Workbench will take care of the rest, even if the files are in different formats. You can also simply drag and drop the files into the **Navigation Area** of the CLC Workbench.

The CLC Workbench supports import of several NTI formats, but not all. In case problems are encountered, try exporting NTI files to a more generic file format and then import these.



Chapter 2

Install and uninstall plugins

Vector NTI Import is installed as a plugin.

Note: In order to install plugins and modules, the Workbench must be run in administrator mode. On Linux and Mac, it means you must be logged in as an administrator. On Windows, you can do this by right-clicking the program shortcut and choosing "Run as Administrator".

Plugins are installed and uninstalled using the plugin manager.

Help in the Menu Bar | Plugins... () or Plugins () in the Toolbar

The plugin manager has two tabs at the top:

- **Manage Plugins.** This is an overview of plugins that are installed.
- **Download Plugins.** This is an overview of available plugins on QIAGEN Aarhus server.

2.1 Install

To install a plugin, click the **Download Plugins** tab. This will display an overview of the plugins that are available for download and installation (see figure 2.1).

Select Vector NTI Import to display additional information about the plugin on the right side of the dialog. Click **Download and Install** to add the plugin functionalities to your workbench.

Accepting the license agreement

The End User License Agreement (EULA) must be read and accepted as part of the installation process. Please read the EULA text carefully, and if you agree to it, check the box next to the text **I accept these terms**. If further information is requested from you, please fill this in before clicking on the **Finish** button.

If Vector NTI Import is not shown on the server but you have the installer file on your computer (for example if you have downloaded it from our website), you can install the plugin by clicking the **Install from File** button at the bottom of the dialog and specifying the plugin *.cpa file saved on your computer.

When you close the dialog, you will be asked whether you wish to restart the workbench. The plugin will not be ready for use until you have restarted.

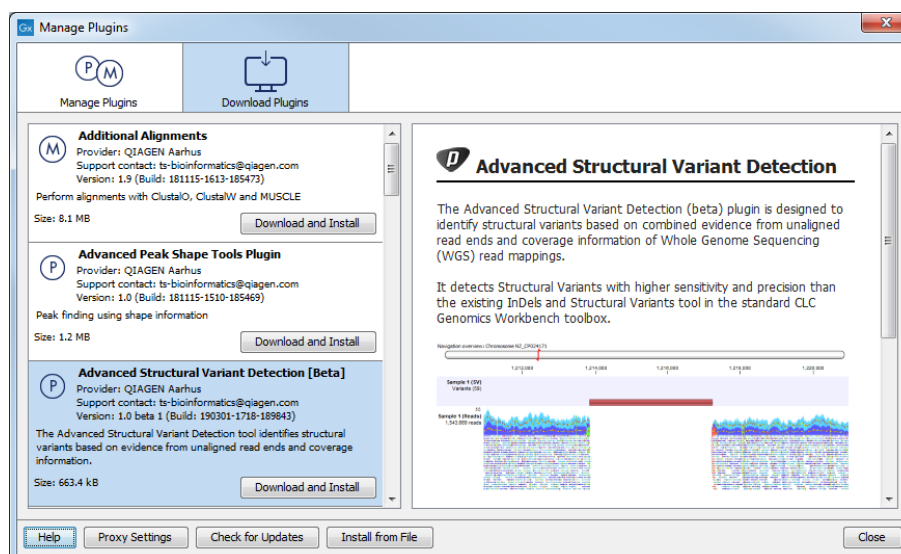




Figure 2.1: The plugins that are available for download.

2.2 Uninstall

Plugins are uninstalled using the plugin manager:

Help in the Menu Bar | **Plugins...** () or **Plugins** () in the **Toolbar**

This will open the dialog shown in figure 2.2.

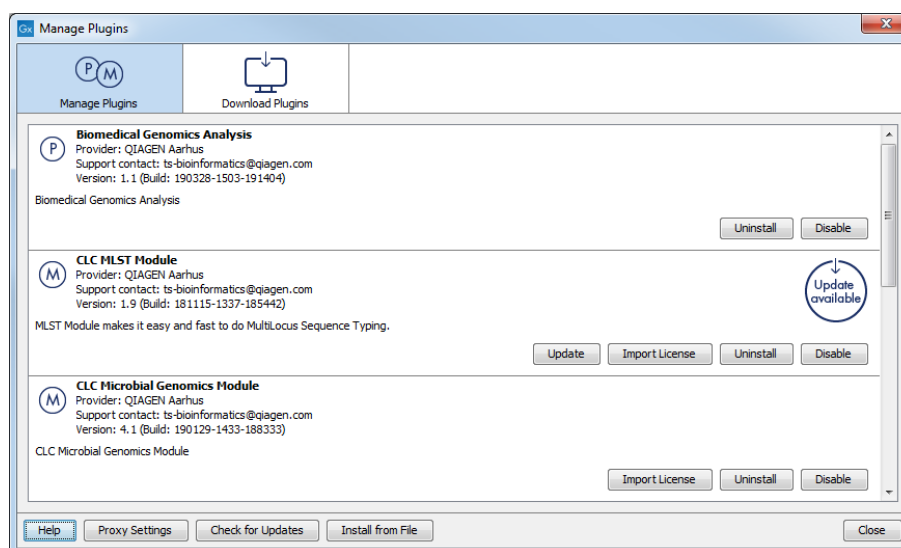


Figure 2.2: The plugin manager with plugins installed.

The installed plugins are shown in the **Manage plugins** tab of the plugin manager. To uninstall, select Vector NTI Import and click **Uninstall**.

If you do not wish to completely uninstall the plugin, but you do not want it to be used next time you start the Workbench, click the **Disable** button.

When you close the dialog, you will be asked whether you wish to restart the workbench. The plugin will not be uninstalled until the workbench is restarted.