



CLC Network License Manager

ADMINISTRATOR MANUAL

Administrator manual for CLC Network License Manager 5.5.5

Windows, macOS and Linux

June 18, 2025

This software is for research purposes only.

QIAGEN Aarhus A/S
Kalkværksvej 5, 11.
DK - 8000 Aarhus C
Denmark



Contents

1	Introduction	5
1.1	Overview	5
1.2	Software requirements	6
1.3	Network requirements	7
1.4	Firewall settings	7
1.5	Quick overview of CLC Network License Manager setup	7
2	Installation and launch	8
2.1	Windows installation and launch	8
2.2	macOS installation and launch	10
2.3	Linux installation and launch	12
2.4	Installation modes - console and silent	17
2.5	Upgrading the CLC Network License Manager	18
3	Configuration	20
3.1	General configuration	20
3.2	Access configuration	21
3.3	Setting limits	25
4	Monitoring the license manager	27
4.1	The LM-X Graphical License Server Client	27
4.2	The LM-X End User Utility	28
4.3	The license manager log file	29
5	Configuring Workbenches to use network licenses	31
	Appendix	35

A	License download	36
A.1	Download license files for Windows	36
A.2	Download license files for macOS	37
A.3	Download license files for Linux	37
A.4	Download license files on non-networked machines	38
B	Feature names	40
	Index	40

Chapter 1

Introduction

Welcome to the CLC Network License Manager 5.5.5 – software for hosting network licenses for QIAGEN CLC products.

This manual is written for system administrators and thus assumes some degree of familiarity with standard administration concepts on the platform being used.

Please contact us at ts-bioinformatics@qiagen.com if you have any questions or comments about this product.

1.1 Overview

The CLC Network License Manager hosts network licenses for QIAGEN CLC applications.

Network licenses are checked out when client software starts running, and are checked back in when the software is closed. This allows a single license to be used on different machines at different times. For modules (commercial plugins), a network license is only checked out at the time the first tool delivered by that module is launched in a given Workbench session (see section 5). If people wish to run a licensed application while offline, they can *borrow* a license for a certain period of time (see section 5).

Access to and reserving of licenses for particular users or machines can be configured, as can the maximum number of licenses that can be used by certain users, groups, or sets of machines, and the maximum length of time a license can be borrowed (see section 3).

Network licenses are required if the CLC software is installed on systems with more than 64 cores, or if the software will be accessed remotely.

Figure 1.1 illustrates aspects of typical scenarios making use of network licenses.

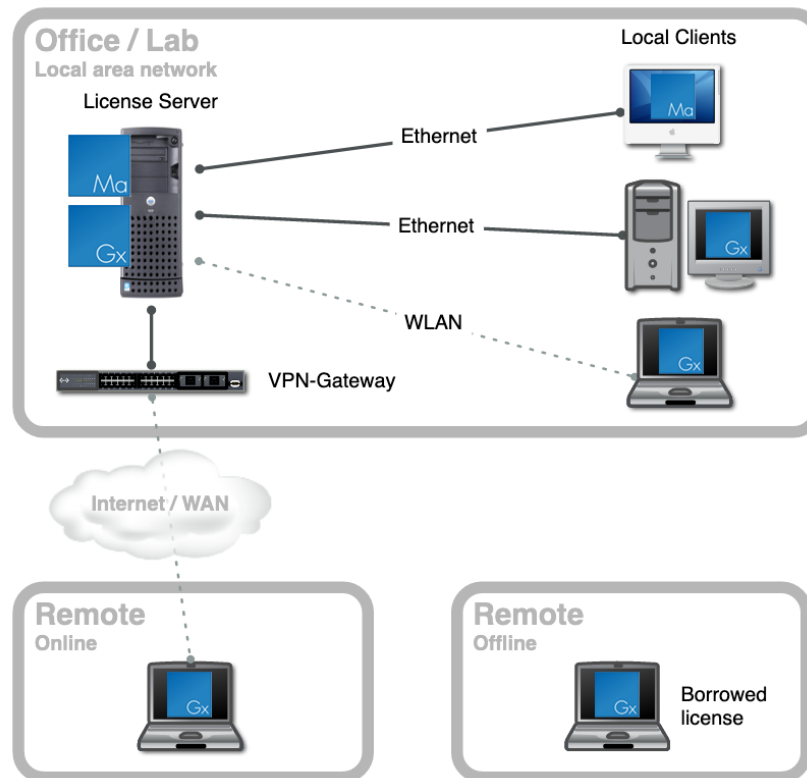


Figure 1.1: Diagram of a setup to serve network licenses.

1.2 Software requirements

The CLC Network License Manager does not require much processing power and only consumes a few megabytes of memory. This means that if you are putting together a dedicated server specifically for running the license manager, a modestly powered system equipped with a high number of redundant components will probably be a better investment than a system which is faster, has more memory, etc.

The system requirements for the CLC Network License Manager are:

- Windows 10 and 11
- macOS 12, 13 and 14. The software is expected to run without problems on more recent macOS releases than those listed, but we do not guarantee this.
- Linux The software is expected to run without problem on recent Linux x86-64 systems. Further details are below.

The CLC Network License Manager is based on the LM-X License Manager 5.5.10. The list above has been derived from the LM-X supported system list: <https://docs.x-formation.com/display/LMX/Supported+platforms> and systems we have tested on. The CLC Network License Manager is expected to work on 64 bit Windows, macOS and Linux systems not explicitly listed that meet requirements on the LM-X site, but we cannot guarantee this.

1.3 Network requirements

To check out a license, the software client needs to establish a TCP-connection to the license manager program running on your server machine. This means that the server system needs to be contactable by clients on the LAN or WAN network.

Clients at remote locations can also use network licenses if they are on systems that can contact the license manager, e.g. if they are on systems connected via a VPN gateway or a similar solution.

Access to the CLC Network License Manager can be configured, as described in section [3](#).

1.4 Firewall settings

To allow clients to connect to the license manager, incoming TCP-traffic to the port that the server is listening on must be allowed. The default port number used by the CLC Network License Manager is 6200. This can be changed if desired, as described in section [3.1](#).

To allow use of the auto-discovery feature, incoming broadcast UDP traffic to port number 6200 must be allowed. This port number cannot be changed.

1.5 Quick overview of CLC Network License Manager setup

The general steps for setting up the CLC Network License Manager are:

1. Install the software.
2. Configure the service.
3. Download license files.
4. Start the CLC Network License Manager and check it is running as expected.
5. Optionally, customize the setup to suit local requirements.
6. Configure clients to connect to the CLC Network License Manager.

The remainder of this manual expands on each of these steps.

Chapter 2

Installation and launch

This chapter describes how to install and launch the CLC Network License Manager for each supported OS type separately.

2.1 Windows installation and launch

If upgrading from an earlier version, please refer to section 2.5.

To install the CLC Network License Manager:

1. Download the installer from <https://digitalinsights.qiagen.com/products/clc-network-license-manager-direct-download/> or from your myCLC account.
2. Double-click the installer icon to launch it. You will be prompted to choose the location to install the software to. If the C: drive is the default drive, then the default installation location offered will be C:\Program Files\CLCNetworkLicenseManager5.

To run the CLC Network License Manager as a Windows Service, right-click on the `installservice` file in the installation directory and choose the option **Run as administrator** from the menu. See figure 2.1.

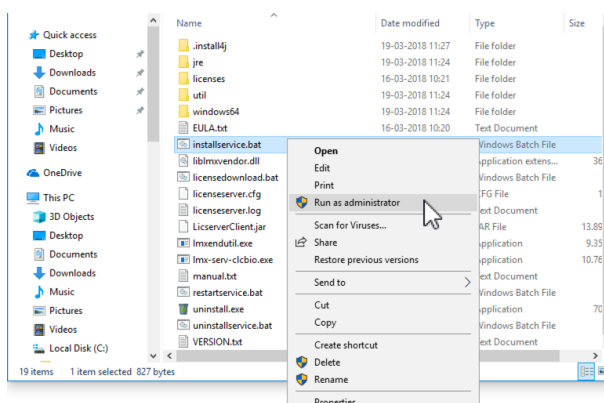


Figure 2.1: Installing the license manager as a service.

This will open a terminal window and guide you through the service installation procedure. Press

a key on the keyboard when prompted to do so.

Once successfully installed, the service will be visible in the **Services** control panel in Windows. See figure 2.2.

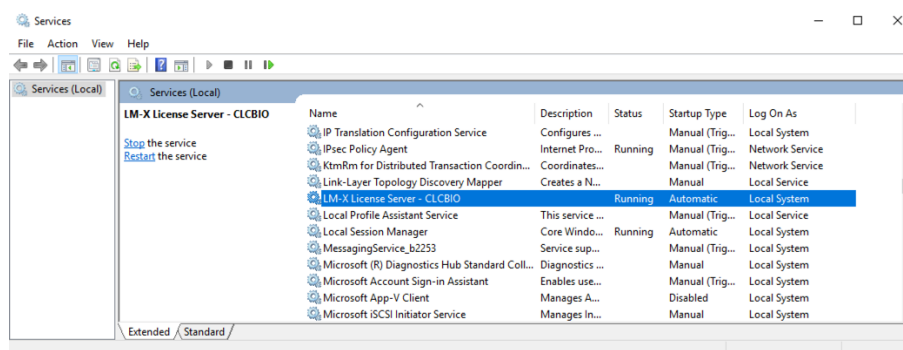


Figure 2.2: The services window can be found in the Control Panel.

The name of the service is LM-X License Server - CLCBIO. From here you can start, stop and restart the service if needed.

You are now ready to download a license file. See section 2.1.1.

2.1.1 Downloading license files for Windows

On a networked machine, license files can be downloaded by running the `licensedownload.bat` script with administrator privileges. To do this, view the contents of the CLC Network License Manager installation directory, and right-click on the `licensedownload.bat` file. Choose the option **Run as administrator** from the context menu.

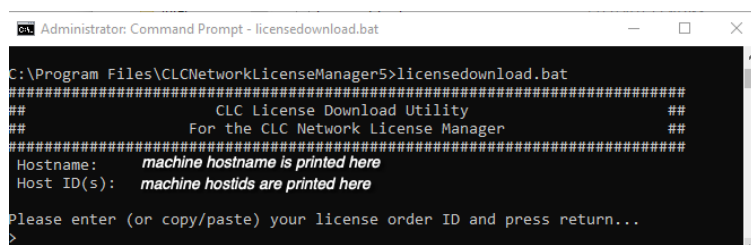


Figure 2.3: Enter a License Order ID at the prompt to download a license.

Paste in the Order ID supplied by QIAGEN at the prompt.

When you run the `licensedownload.bat` script, a new license file is downloaded into the `licenses` folder, which is under the installation area of the CLC Network License Manager software. This is where the CLC Network License Manager looks for licenses by default.

If the license manager is already running, you need to restart it for the new licenses to be loaded. You can restart the service through the Services control panel, as shown in figure 2.2. It can also be restarted by right-clicking on the `restartservice` script and choosing the option **Run as administrator**.

To download and install a license file on a non-networked machine, please see section A.4.

Upgrading an existing license: If you are *upgrading* an existing license file, then it is very

important that old license files, that is, the ones you are replacing, are deleted before the CLC Network License Manager is restarted. The old file(s) can be removed before or after you download the new license file(s).

If you have not received a license order ID or there are problems with your license order ID, please contact bioinformaticslicense@qiagen.com.

2.1.2 Checking that the server is ready

After starting the CLC Network License Manager, check that it is up and running and the licenses you expect to see are available. See section 4 for details.

2.1.3 Uninstalling the Windows Service

To uninstall the service, you can use the `uninstallservice.bat` script. Run this by right-clicking on the icon and choosing the menu option **Run as administrator**.

2.2 macOS installation and launch

2.2.1 Installing the software on macOS

If upgrading from an earlier version of the CLC Network License Manager, please refer to section 2.5.

To install the CLC Network License Manager:

1. Download the installer from <https://digitalinsights.qiagen.com/products/clc-network-license-manager-direct-download/> or from your myCLC account.
2. Double-click the installer icon to launch it. You will be prompted to choose the installation location. The default location on macOS is: `/Applications/CLCNetworkLicenseManager5/`.

The installer extracts the relevant files, places them in the chosen installation folder, and starts the service.

2.2.2 Configure the service to be run by a designated user

We recommend the service is configured to be run as a standard user rather than the default daemon user. These steps need to be done by someone working with administrative privileges. In the examples below, the software had been installed to the default installation folder, `/Applications/CLCNetworkLicenseManager5/`.

1. Create a user for running the CLC Network License Manager if you do not already have one. We use the user *joebloggs* in the example in this section.
2. Ensure the CLC Network License Manager is not running. If you are not sure, then run the `stopserver.command` script (e.g. by double clicking on it its icon).

3. Check that there is no lock file. If there is one, remove it.

```
ls /var/tmp/clcbio.lock
sudo rm /var/tmp/clcbio.lock
```

4. Change the ownership of the license manager installation directory and its contents to the user that should own the CLC Network License Manager process.

```
sudo chown -R joebloggs /Applications/CLCNetworkLicenseManager5/
```

5. Specify the user to run the process in the plist file under the `CLCLicenseServerLaunchDaemon` subfolder of the installation area:

```
/Applications/CLCNetworkLicenseManager5/CLCLicenseServerLaunchDaemon/com.clcbio.licenseserver.plist
```

Find this section:

```
<key>UserName</key>
<string>daemon</string>
```

And edit the name between the string tags:

```
<key>UserName</key>
<string>joebloggs</string>
```

After making changes, reload the plist using the `installservice` command in the '`CLCLicenseServerLaunchDaemon`' subfolder of the installation directory:

```
/Applications/CLCNetworkLicenseManager5/CLCLicenseServerLaunchDaemon/installservice
```

2.2.3 Downloading license files for macOS

Downloading and installing licenses on a machine with the CLC Network License Manager installed and with access to the external network is described in this section. To download and install a license file on a system without access to the external network, please see section [A.4](#).

To download and install licenses in the CLC Network License Manager on a machine with access to the external network:

1. Run the `downloadlicense.command` script, found in the CLC Network License Manager installation area. Usually this will need to be done as a user with administrator privileges.

For example, if the default installation location for the CLC Network License Manager was used, the following command could be run:

```
sudo /Applications/CLCNetworkLicenseManager5/downloadlicense.command
```

This script launches a terminal window, where you are prompted to supply a license order ID.

2. Paste in the license order ID supplied by QIAGEN and press Enter.

A new license file is downloaded into the `licenses` folder of the installation area of the CLC Network License Manager software. This is where the CLC Network License Manager looks for licenses by default. The location of the file is printed to the terminal.

3. To load the new license information, the CLC Network License Manager service must be started up, or re-started if it is already running. See section 2.2.5 for details about how to do this.

Upgrading an existing license: If you are *upgrading* an existing license file, then it is very important that old license files, that is, the ones you are replacing, are deleted before the CLC Network License Manager is restarted. The old file(s) can be removed before or after you download the new license file(s).

If you have not received a license order ID or there are problems with your license order ID, please contact bioinformaticslicense@qiagen.com.

2.2.4 Check the service is running on macOS

After starting or restarting the CLC Network License Manager after licenses have been installed, check that it is running as expected, including that the installed licenses have been loaded. See section 4 for further details.

2.2.5 Starting and stopping the license manager on macOS

The following scripts are provided for starting, stopping and restarting the CLC Network License Manager respectively.

- **startserver.command** Run this script to start up the CLC Network License Manager.
- **stopserver.command** Run this script to stop a running CLC Network License Manager.
- **restartserver.command** Run this script to stop a running CLC Network License Manager and start it up again.

The CLC Network License Manager is installed as a service, and should start up automatically when the system is restarted.

2.3 Linux installation and launch

The instructions provided here are for installing the CLC Network License Manager on a CentOS Linux distribution.

If upgrading from an earlier version of the CLC Network License Manager, please refer to section 2.5.

2.3.1 Installing the software on Linux

1. Download the installer from <https://digitalinsights.qiagen.com/products/clc-network-license-manager-direct-download/> or your myCLC account.
2. Launch the installer.

From within the same folder the installer is in, a command of this form could be used to launch the installer:

```
sudo /bin/sh ./<installerName.sh>
```

Installing to a central location on the server machine usually requires administrator privileges.

You will be prompted for the location to install the software to. Locations in this section of the manual refer to the software installation location as <installationDirectory>. The default location on Linux is /opt/CLCNetworkLicenseManager5.

2.3.2 Initial configuration steps on Linux

1. **Create a user to run the CLC Network License Manager service** Create a standard user account for running the CLC Network License Manager service if you do not already have one. Please ensure that this user account has a home directory, such that \$HOME exists and can be found. For some Linux flavors, you can do this simply with a command like:

```
useradd <serviceusername>
```

For other Linux flavors, you may need to add a flag to enable the creation of a home directory.

2. **Ensure appropriate ownership of the license manager files** Change the ownership of the installation directory and all files under that area to be owned by the user that will run the license manager process.

```
chown -R <serviceusername> <installationDirectory>
```

e.g.

```
chown -R clclicsrv /opt/CLCNetworkLicenseManager5
```

3. **Configure the password for remote access to the license manager**

- Open the configuration file <installationDirectory>/licenseserver.cfg with a text editor (e.g. nano, pico, emacs, vi or similar).
- Change the value of the variable **REMOTE_ACCESS_PASSWORD**.

This password is needed when remotely starting or stopping the server, or carrying out certain other administrative tasks remotely.

4. **Optional: make any other desired changes to the configuration file** See section 3 for further details on configuring the CLC Network License Manager.

2.3.3 Running the CLC Network License Manager as a service

The CLC Network License Manager can be run as a service and configured to start when the system is booted. Here we include instructions for doing this using systemd and SystemV. The service should be configured either under systemd or SystemV, not both.

systemd service configuration

To configure the CLC Network License Manager to run as a systemd service and to start up when the system boots up:

1. Edit the file `<installationDirectory>/runscript/clclicsrv.service` using a text editor (e.g. nano, pico, emacs, vi or similar), following the instructions contained in the file. This includes editing the User and Group variables as well as setting the correct password and providing the installation location of the CLC Network License Manager. Notice: the password must be identical to the **REMOTE_ACCESS_PASSWORD** in the license manager configuration file, `licenseserver.cfg`. This file can be found in the installation directory of the CLC Network License Manager.
2. Copy the configured `<installationDirectory>/runscript/clclicsrv.service` file to `/etc/systemd/system/`.
3. For the service to be started when the system boots up, run the command:

```
systemctl enable clclicsrv.service
```

At this point, the CLC Network License Manager normally has not been started. The following sections cover downloading license files and starting up the CLC Network License Manager.

Note: When upgrading the CLC Network License Manager in place, the file `<installationDirectory>/runscript/clclicsrv.service` may be overwritten. Configuration files in central locations like `/etc/systemd/system/` will **not** be overwritten on upgrade.

SystemV service configuration

To configure the CLC Network License Manager to run as a SystemV service and to start up when the system boots up:

1. Edit the file `<installationDirectory>/runscript/clclicsrv` with a text editor (e.g. nano, pico, emacs, vi or similar), providing the relevant information for your installation and environment.

If you have installed the software to the default location, `/opt/CLCNetworkLicenseManager5`, you should only need to edit the values for the variables:
 - **USER** Set this to the user that should own the license manager process.
 - **PASSWORD** Set this to the same value given for the **REMOTE_ACCESS_PASSWORD** in the license manager configuration file, `licenseserver.cfg`. This file can be found in the installation directory of the CLC Network License Manager.

If you have installed the software to a location other than the default, edit the value of the **DIRECTORY** variable accordingly and check the other variables are correct for your installation.

2. Copy the configured `<installationDirectory>/runscript/clclicsrv` file to your startup-script directory. Typically this is `/etc/init.d`.

Note: When upgrading the CLC Network License Manager in place, the file `<installationDirectory>/runscript/clclicsrv` may be overwritten. Configuration files in central locations like `/etc/init.d/` will **not** be overwritten on upgrade.

Enable on-boot startup using chkconfig It is common to want the license manager service to start up whenever the system is started up. If you are installing on a Red Hat-style distribution you can use the `chkconfig` tool to do this.

```
chkconfig clclicsrv on
```

To check if the license manager is set to startup automatically use the following command:

```
chkconfig --list
```

In the output look for a line similar to:

```
clclicsrv 0:off 1:off 2:on 3:on 4:on 5:on 6:off
```

Make sure that the service is listed as **on** for the appropriate run-level (typically 3 or 5).

2.3.4 Downloading license files for Linux

On a networked machine, license files can be downloaded using the `downloadlicense` script with administrator privileges. For example, if the default installation location for the CLC Network License Manager was used, the following command could be run:

```
sudo /opt/CLCNetworkLicenseManager5/downloadlicense
```

Paste in the license order ID supplied by QIAGEN and press Enter.

A new license file is downloaded into the `licenses` folder, which is under the installation area of the CLC Network License Manager software. This is where the CLC Network License Manager looks for licenses by default. The location of the license file is printed to the terminal.

If the license manager is already running, it must be restarted for new licenses to be loaded.

To download and install a license file on a non-networked machine, please see section [A.4](#).

Upgrading an existing license: If you are *upgrading* an existing license file, then it is very important that old license files, that is, the ones you are replacing, are deleted before the CLC Network License Manager is restarted. The old file(s) can be removed before or after you download the new license file(s).

If you have not received a license order ID or there are problems with your license order ID, please contact bioinformaticslicense@qiagen.com.

2.3.5 Starting and stopping the CLC Network License Manager on Linux

Starting and stopping the CLC Network License Manager under systemd

If you have configured the CLC Network License Manager service under `systemd`, then:

- To start the service, run the command:

```
systemctl start clclicsrv.service
```

- To stop the service, run the command:

```
systemctl stop clclicsrv.service
```

- To restart the service, run the command:

```
systemctl restart clclicsrv.service
```

If you make changes to the service while it is running by editing or replacing the file at `/etc/systemd/system/clclicsrv.service` or by editing the `licenseserver.cfg` file, or if you add or remove license files from the `licenses` folder, you will need to restart the service to get the changes to take effect.

- To check the status of the service, run the command:

```
systemctl status clclicsrv.service
```

The commands given in this section must be run by a user with administrative privileges.

For more detailed monitoring of a running license manager, including getting information on the licenses available and usage data, please refer to section 4.

Starting and stopping the CLC Network License Manager under SystemV

If you have configured the CLC Network License Manager service under SystemV, then the `clclicsrv` script is used to start and stop the CLC Network License Manager.

- To start the service, run the command:

```
service clclicsrv start
```

- To stop the service, run the command:

```
service clclicsrv stop
```

- To restart the service, run the command:

```
service clclicsrv restart
```

If you make changes to the service while it is running by editing or replacing the file at `/etc/init.d/clclicsrv` or by editing the `licenseserver.cfg` file, or if you add or remove license files from the `licenses` folder, then you need to restart the service to get the changes to take effect.

The commands given in this section must be run by a user with administrative privileges.

For information about monitoring a running license manager, including getting information on its status, the licenses available and usage data, please refer to section 4.

Starting and stopping the CLC Network License Manager without running it as a service

If you choose not to run the CLC Network License Manager as a service, you can start, stop and restart the server directly by editing the file `<installationDirectory>/runscript/clclicsrv` with a text editor (e.g. nano, pico, emacs, vi or similar), providing the relevant information for your installation and environment and then running that script with the argument `start`, `stop` or `restart`.

- To start the server, run the command:

```
<installationDirectory>/runscript/clclicsrv start
```

- To stop the server, run the command:

```
<installationDirectory>/runscript/clclicsrv stop
```

- To restart the service, run the command:

```
<installationDirectory>/runscript/clclicsrv restart
```

If you make changes to the service while it is running by editing the `licenseserver.cfg` file, or if you add or remove license files from the `licenses` folder, then you need to restart the server to get the changes to take effect.

The commands given in this section must be run by a user with administrative privileges.

For information about monitoring a running license manager, including getting information on its status, the licenses available and usage data, please refer to section [4](#).

2.4 Installation modes - console and silent

Two installation modes are available to support efficient installation of the software.

- **Console mode** This mode is particularly useful when installing onto remote systems. On Linux, this mode is enabled by using the option `-c` when launching the installer from the command line. On Windows the option is `-console`.
- **Silent mode** This mode supports hands-off installation. Default answers to all prompts are used, although a non-default installation directory can be specified if desired (see below). Silent mode is activated using the `-q` parameter when launching the installer from the command line. On Windows, the `-console` option can be appended after `-q`, that is, as *the second parameter*, to ensure output to the console.

If desired, you can **specify the directory to install the software to** when running the installer in silent mode. Do this adding the `-dir` option to the command line.

On Windows, the `-console` and the `-dir` options only work when the installer is run in silent mode.

The following is an example of a command that would install the software into the directory `"c:\bioinformatics\clc"` on a Windows system using silent mode with console output. The same form of command works for any CLC installer.

```
CLCNetworkLicenseManager_i_5_5_3_64.exe -console -q -dir "c:\bioinformatics\clc"
```

On a Linux system, a similar command to install into the directory `/opt/bioinformatics/clc` could look like:

```
./CLCNetworkLicenseManager_5_5_3_64.sh -q -c -dir /opt/bioinformatics/clc
```

The `-q` and the `-console` options work for the uninstall program as well.

2.5 Upgrading the CLC Network License Manager

Upgrading the CLC Network License Manager to a newer version

To upgrade to CLC Network License Manager 5.5.5 from an earlier version of the CLC Network License Manager:

- Stop the running license manager process.
- Install the updated software to the same folder as the existing CLC Network License Manager installation.
- Check the configuration, file ownership and service configuration are updated.
- Start the CLC Network License Manager.

Links to documentation on configuring the installation and starting and stopping the service:

- Windows: Section [2.1](#)
- Linux: Sections [2.3.2](#) and [2.3.3](#)
- macOS: Sections [2.2.5](#) and [2.2.2](#)

Upgrading to the CLC Network License Manager from a CLC License Server

Since May, 2021 the product used to serve network licenses has been named CLC Network License Manager. Prior to that, it was named CLC License Server. To upgrade from any version of the CLC License Server to the CLC Network License Manager, the general steps are:

- Stop the running license server process.
- Install the CLC Network License Manager to a **new location**, following the installation instructions for the relevant platform.
- Install the licenses, following the instructions for downloading license files for the relevant platform.

Alternatively copy the old license files, usually this is from within the `licenses` folder of the old installation area, into the `licenses` folder of the new installation.

If upgrading the CLC Network License Manager around the time of a major release of the CLC analysis software, we recommend downloading new license files.

- If you have customized the `licenseserver.cfg` file in the older installation, then either copy that file into the installation area of the new CLC Network License Manager or edit the new `licenseserver.cfg` file as needed.

When upgrading from CLC License Server 3.6.1, we recommend that you read and keep a copy of the new `licenseserver.cfg` file as it contains more information about possible configurations than earlier versions of that file.

- If you were running the CLC License Server) as a service, check that the service configuration is correct.

When upgrading on Linux: If the service is configured under SystemV, check that the `clclicsrv` script under `/etc/init.d` has the correct information for the upgraded installation. If changing from using SystemV to `systemd` for handling the CLC Network License Manager service, ensure that you remove any earlier SystemV configuration files from `/etc/init.d`.

- Start up the new CLC Network License Manager following the instructions given for the relevant platform.

Links to documentation on configuring the installation and starting and stopping the service are provided near the top of this section.

Troubleshooting note when upgrading mac installations

If the CLC Network License Manager service does not start up as expected on a mac after upgrading from CLC License Server 4.0 to CLC Network License Manager 5.5.5, check that `/usr/local/lib` is a folder. If you find it is not, for example, if it is a symbolic link to `liblmxvendor.dylib` in the CLC License Server 4.0 installation, remove that file/symbolic link and rerun the `installservice` script in the installation area of the CLC Network License Manager, e.g. at

```
/Applications/CLCNetworkLicenseManager5/CLCLicenseServerLaunchDaemon/installservice
```

Chapter 3

Configuration

Configuration of the CLC Network License Manager is done by editing the `licenseserver.cfg` file and subsequently restarting the license manger. Many customizations are possible, including setting the paths to various files and creating access restrictions. Many of the configuration options are described within the `licenseserver.cfg` file itself.

Information in this section can also be found at <https://docs.x-formation.com/display/LMX/License+server+configuration+file>, although not all options described there are supported.

3.1 General configuration

Below are descriptions of configuration options that specify the environment of the license manager, paths to various files, and the administration password.

TCP_LISTEN_PORT This option defines the TCP port number that the license manager will use to listen for connections. The TCP port is used for the data traffic protocol.

The default TCP port is 6200, but can be changed by editing the `TCP_LISTEN_PORT` setting.

```
TCP_LISTEN_PORT = 6200
```

A separate UDP port is used for automatic server discovery protocol. The UDP port is fixed to 6200. It cannot be changed.

LICENSE_FILE Specify the path to a license file to be read by the server. The filenames must be lowercase. You can specify one or multiple paths as needed.

By default, all licenses in the folder called *licenses* in the installation area of the CLC Network License Manager will be read.

Examples:

```
LICENSE_FILE = d:\server\network.lic  
LICENSE_FILE = /home/licserver/floating_license.lic  
LICENSE_FILE = /home/licserver/floating_license2.lic
```

REMOTE_ACCESS_PASSWORD Specify the remote administration password which is used when remotely stopping and restarting the license manager, and when carrying out administration tasks via graphical client, described in section 4.1. We recommend this password is changed from its default value.

The password is case-sensitive.

Example:

```
REMOTE_ACCESS_PASSWORD = MyPassword123
```

LOG_FILE Specify where the log file should be written to.

If you do not specify this setting, the log file is written to the default location. See section 4.3.

If editing this entry, the absolute path to the log file is recommended.

Examples:

```
LOG_FILE = c:\program files\licenserver.log  
LOG_FILE = /var/log/licenseserver.log
```

LOG_EXCLUDE Exclude specific messages from the log. The following messages can be excluded: CHECKOUT, CHECKIN, STATUS, BORROW, BORROW_RETURN, REMOVE_USER, REMOTE_RESTART or REMOTE_SHUTDOWN.

Example:

```
LOG_EXCLUDE = CHECKOUT, CHECKIN, STATUS
```

3.2 Access configuration

This section describes how to customize access to licenses. This includes things like defining users or systems that can connect to the CLC Network License Manager, as well as which licenses they have access to, reserving licenses, and restricting borrowing rights.

Configurations are specified as a set of rules. These rules are applied in the sequence they appear in the configuration file. The first rule matched for a particular type of configuration is the one used for that user or system.

Access configurations can be applied for all products or for specific products. An individual product is specified using its feature name. This is indicated in the information below as <feature>. The feature names for the products supported by your network licenses can be found by either of the following methods:

- Running the `lmxendutil` command, as described in section 4.2.1
- Running the LM-X License Server Client, described in section 4.1, and referring to the drop down list labeled Feature in the right hand pane.

Feature names for a number of CLC products are also provided in appendix B.

Configurations are set using IP addresses, hostnames or usernames. Multiple entries for a given configuration must be specified as a space-separated list. IP addresses must be specific addresses with the form: A.B.C.D or with wildcards A.*.B.*

To specify that a rule should apply to a group of users, provide the username of each member individually. Alternatively, for CLC Workbenches, members of a particular group could use a single custom username, used when requesting network licenses. Then this custom username could be entered in configurations, instead of individual group member user names. See section 5.

3.2.1 Permissions

Standard license checkouts

By default, software on any machine able to connect to the CLC Network License Manager could request a license. This can be restricted, with fine grained configurations limited access to certain hosts, domains or users.

Rules that can be configured:

Option	Argument	Description
ALLOW_IPADDR_ALL	One or more IP addresses	Allow access to all features for the specified IP addresses.
ALLOW_IPADDR_<feature>	One or more IP addresses	Allow access to a specific feature for the specified IP addresses.
DENY_IPADDR_ALL	One or more IP addresses	Deny access to all features for the specified IP addresses.
DENY_IPADDR_<feature>	One or more IP addresses	Deny access to a specific feature for the specified IP addresses.
ALLOW_HOST_ALL	One or more host names	Allow access to all features for the specified host names.
ALLOW_HOST_<feature>	One or more host names	Allow access to a specific feature for the specified host names.
DENY_HOST_ALL	One or more host names	Deny access to all features for the specified host names.
DENY_HOST_<feature>	One or more host names	Deny access to a specific feature for the specified host names.
ALLOW_USER_ALL	One or more users	Allow access to all features for the specified users
ALLOW_USER_<feature>	One or more users	Allow access to a specific feature for the specified users
DENY_USER_ALL	One or more users	Deny access to all features for the specified users
DENY_USER_<feature>	One or more users	Deny access to a specific feature for the specified users

In the example below, 2 clients on 2 subnets are allowed to connect to the license manager, and two users, *alice* and *bob* are allowed to connect. All others are denied access.

Example 1:

```
ALLOW_IPADDR_ALL = 192.168.1.* 192.168.2.*
ALLOW_USER_ALL = alice bob
DENY_IPADDR_ALL = *.*.*.*
```

In the example below, machines with hostname 'lab1' or 'office1' are denied access to CLC Main Workbench licenses. Other clients on the internal network are allowed to request CLC Main Workbench licenses, but any others are denied access to CLC Main Workbench licenses.

Example 2:

```
DENY_HOST_CLCMAINWB = lab1 office1
ALLOW_IPADDR_CLCMAINWB = 192.168.*.*
DENY_IPADDR_CLCMAINWB = *.*.*.*
```

Borrowing restrictions

Network licenses can be borrowed using functionality offered in the CLC Workbench License Manager, which is described in section 5. By default, all users can borrow licenses for between 1 hour and 7 days. How to restrict borrowing is described in this section. How to decrease the maximum time a license can be borrowed is described in section 3.3.

Rules that can be configured:

Option	Argument	Description
ALLOW_BORROW_IPADDR_ALL	One or more IP addresses	Allow all features to be borrowed for the specified IP addresses.
ALLOW_BORROW_IPADDR_<feature>	One or more IP addresses	Allow the specific feature to be borrowed for the specified IP addresses.
DENY_BORROW_IPADDR_ALL	One or more IP addresses	Deny all features to be borrowed for the specified IP addresses.
DENY_BORROW_IPADDR_<feature>	One or more IP addresses	Deny Allow the specific feature to be borrowed for the specified IP addresses.
ALLOW_BORROW_HOST_ALL	One or more host names	Allow all features to be borrowed for the specified host names.
ALLOW_BORROW_HOST_<feature>	One or more host names	Allow the specific feature to be borrowed for the specified host names.
DENY_BORROW_HOST_ALL	One or more host names	Deny all features to be borrowed for the specified host names.
DENY_BORROW_HOST_<feature>	One or more host names	Deny the specific feature to be borrowed for the specified host names.
ALLOW_BORROW_USER_ALL	One or more users	Allow all features to be borrowed for the specified users
ALLOW_BORROW_USER_<feature>	One or more uses	Allow the specific feature to be borrowed for the specified users
DENY_BORROW_USER_ALL	One or more users	Deny all features to be borrowed for the specified users
DENY_BORROW_USER_<feature>	One or more users	Deny the specific feature to be borrowed for the specified users

The rules are written and used in the same way as the access restriction rules described in the previous section.

The following line would disable borrowing for all users:

```
DENY_BORROW_IPADDR_ALL = *.*.*.*
```

3.2.2 Reservations

A specified number of licenses can be reserved for particular users or systems. Rules are applied in the order specified, allowing you to give some users higher priority than others.

Example:


```
RESERVE_USER_CLCGENOMICSWB_1 = joebloggs marysmith
RESERVE_IPADDR_CLCGENOMICSWB_3 = 192.168.2.* 192.168.4.*
```

This would have the effect of reserving 1 CLC Genomics Workbench license for use by joebloggs or marysmith and 3 CLC Genomics Workbench licenses for use on machines with particular IP addresses.

`RESERVE_HOST_feature name_reservenumber` is also available for reserving licenses by hostname.

3.3 Setting limits

Limiting the number of licenses available to users or groups

The number of licenses that can be used by particular users or groups of users can be limited, to help support the desired distribution of licenses. Limiting particular users' access is done by a first match rule, so if a user is listed in more than one rule, the first rule encountered will apply to that user.

Example:

```
LIMIT_USER_CLCGENOMICSWB_1 = joebloggs marysmith
LIMIT_IPADDR_CLCGENOMICSWB_3 = 192.168.2.* 192.168.4.*
```

The first statement would limit the number of CLC Genomics Workbench licenses available to joebloggs and marysmith to one, meaning only one of them could be running a CLC Genomics Workbench at any given time. The second statement specifies that a maximum of 3 CLC Genomics Workbench licenses can be checked out at any given time by machines with IP addresses matching the pattern provided.

`LIMIT_HOST_featurename_limitcount` is also available for limiting licenses by hostname.

Borrow limits Two limits are available that can be used to prevent clients from borrowing all the available licenses for a given feature, or from borrowing a feature for an unreasonable long time.

- **BORROW_LIMIT_COUNT** Imposes a limit on the number of licenses that can be borrowed to prevent all licenses from being borrowed at the same time. Borrow limits are configured separately for each feature.

The syntax is:

```
BORROW_LIMIT_COUNT_<feature name> = <limit count>
```

Where `<limit count>` is number from 1 to the number of available licenses for the given feature. If you wish to restrict the feature from being borrowed completely you should specify a restriction as described in the previous section.

Example:

```
BORROW_LIMIT_COUNT_CLCMAINWB = 1
BORROW_LIMIT_COUNT_CLCGENOMICSWB = 5
```

The configuration in the example above will allow one license for the CLC Main Workbench to be borrowed and five licenses for the CLC Genomics Workbench to be borrowed.

- **BORROW_LIMIT_HOURS** Limit the number of hours that licenses can be borrowed to prevent licenses from being borrowed too long. Borrow limits are configured separately for each feature.

The syntax is:

```
BORROW_LIMIT_HOURS_<feature name> = <limit hours>
```

Where `<limit hours>` is a number between 1 and the maximum borrow period imposed by the license. The maximum borrow limit for CLC Workbenches is one week.

Example:

```
BORROW_LIMIT_HOURS_CLCMAINWB = 48  
BORROW_LIMIT_HOURS_CLCGENOMICSWB = 12
```

The configuration in the example above will allow licenses for the CLC Main Workbench to be borrowed and for 48 hours and licenses for the CLC Genomics Workbench to be borrowed for 12 hours.

Chapter 4

Monitoring the license manager

4.1 The LM-X Graphical License Server Client

The LM-X License Server Client software can be used to monitor license usage as well as carry out administrative tasks, such as restarting or shutting down the license manager and editing the configuration file.

Documentation for the LM-X License Server Client can be found at <https://docs.x-formation.com/display/LMX/Using+LM-X+License+Server+Client>.

Figure 4.1 shows a view of the LM-X License Server Client. The Feature Usage chart shown on the right hand side displays license usage for the selected software over a maximum period of the previous month. For information on longer running instances, the license manager log file can be referred to. See section 4.3 and section 4.2.1.

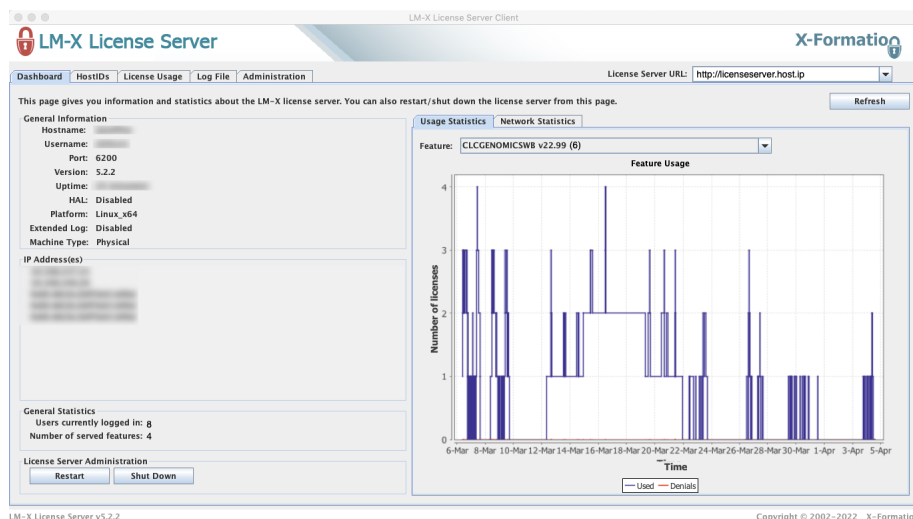


Figure 4.1: The LMX License Server Client provides views of license usage and allows administrative tasks to be carried out. The version of the software reported is that of the underlying LM-X License Manager.

The LM-X License Server Client is distributed as a jar file called `LicserverClient.jar` and is included with the CLC Network License Manager distribution. It can be used on any system with Java Runtime Environment (JRE) v. 1.8 or newer present on it.

The operating system of the machine LM-X License Server Client is used on does not need to match the operating system of the machine the CLC Network License Manager is running on. So, for example, a license manager running on Linux can be monitored from a computer running Windows.

To get the `LicserverClient.jar` onto a client machine, you can either copy the file from the installation area of the CLC Network License Manager, or you can download the CLC Network License Manager installer for the client machine from <https://digitalinsights.qiagen.com/products/clc-network-license-manager-direct-download/> or from your myCLC account, run the installer, and then use the `LicserverClient.jar` file that is included with the distribution.

4.2 The LM-X End User Utility

The LM-X End User Utility is a command line client that can be used to query the license manager. It is available for all platforms and is distributed as a binary file called `lmxendutil`. It is included with the CLC Network License Manager distribution.

The LM-X End User Utility output displays the *current status* of the license manager. This differs from the information presented using the LM-X License Server Client described in section [4.1](#), which provides information on current and past usage.

In the commands below, the information enclosed in angle-brackets, `<` and `>`, must be replaced by the relevant information for your system. Angle brackets should not be included in the command used.

If you are running the LM-X End User Utility on the same machine as the CLC Network License Manager and it is using the standard port (6200), you can omit the `-host` and `-port` options from the commands. If you omit the `-password` option from the command, you will be prompted for it when executing the command if it is needed.

To display the current status of the license manager, use the command:

```
lmxendutil -licstat -host <server host> -port <port>
```

This returns a listing of the licenses in use, including the user and host name, and date and time a license was checked out.

Licenses checked out for a particular user can be retrieved using the following command:

```
lmxendutil -removeuser -clientusername <user>  
-clienthostname <host> -host <host>  
-port <port> -password <password>
```

The operating system of the machine the LM-X End User Utility is used on does not need to match the operating system of the machine the CLC Network License Manager is running on. So, for example, a license manager running on Linux can be monitored from a computer running Windows.

To get a copy of the `lmxendutil` suitable for a particular operating system, download the corresponding CLC Network License Manager installer from <https://digitalinsights.qiagen.com/products/clc-network-license-manager-direct-download/>

[giagen.com/products/clc-network-license-manager-direct-download/](https://www.giagen.com/products/clc-network-license-manager-direct-download/) or from your myCLC account, run the installer, and then use the `lmxendutil` program that is included.

4.2.1 XML format status information

The `lmxendutil` End User Utility can also be used to extract the CLC Network License Manager status in XML format.

The syntax for displaying the license statistics in XML format is:

```
/lmxendutil -licstatxml -host <server host> -port <server port>
```

The output produced will look something like that shown below. The values for the `FEATURE_NAME` tags refer to the products licenses being offered on this system.

```
<LM-X STAT_VERSION="5.2.2">
<LICENSE_PATH TYPE="NETWORK" HOST="6200@mylichost.mysite.com" SERVER_VERSION="5.2.2"
  UPTIME="2 day(s) 1 hour(s) 56 min(s) 59 sec(s)" STATUS="SUCCESS">
<FEATURE NAME="CLCGENOMICSWB" VERSION="22.99" VENDOR="CLCBIO" END="2022-05-31" USED_LICENSES="1"
  TOTAL_LICENSES="1" DENIED_LICENSES="1" RESERVED_LICENSES="0" SHARE="VIRTUAL">
<USED>
<USER NAME="bob" HOST="123-xxx.xxx.xxx.com" IP="::1" USED_LICENSES="1"
  LOGIN_TIME="2022-03-07 14:16" CHECKOUT_TIME="2022-03-07 14:16"/>
</USED>
<DENIALS>
<USER NAME="joan" HOST="123-xxx.xxx.xxx.com" IP="::1" DENIED_LICENSES="1"
  LOGIN_TIME="2022-03-07 14:15" DENIAL_TIME="2022-03-07 14:15"/>
</DENIALS>
</FEATURE>
<FEATURE NAME="CLCMAINWB" VERSION="22.99" VENDOR="CLCBIO" END="2022-05-31" USED_LICENSES="0"
  TOTAL_LICENSES="1" DENIED_LICENSES="0" RESERVED_LICENSES="0" SHARE="VIRTUAL"/>
<FEATURE NAME="CLC_GENOMICS_PREMIUM_MODULES" VERSION="22.99" VENDOR="CLCBIO" END="2022-05-31"
  USED_LICENSES="0" TOTAL_LICENSES="1" DENIED_LICENSES="0" RESERVED_LICENSES="0" SHARE="VIRTUAL"/>
</LICENSE_PATH>
</LM-X>
```

A list of the feature names for many of our licensed products is given in the appendix [B](#).

Depending on how this output is processed you can use this functionality for many different purposes including:

- Automatic monitoring of license manager health and usage
- Generating statistics about license usage
- Presenting the status of the license manager in some other way (for example on a web page)

4.3 The license manager log file

A good source of information about a running CLC Network License Manager is the log file. It contains information about the license manager software itself (e.g. start up, shutdown, version, location of the configuration file, etc.) as well as about the licenses available, and the usage of those licenses. By default, the log file is created anew when the CLC Network License Manager is started up.

The log file is a text file called `licenseserver.log` and is located in the installation area of the CLC Network License Manager. It can be viewed directly using standard tools for reading text files, or it can be viewed and searched using the LM-X License Server Client described in section 4.1.

The name and location of the log file, and aspects of its contents, can be customized as described in section 3.1.

The log file can be used for generating license usage statistics directly, but for this purpose, the LM-X License Server Client or the XML output that can be generated using the LM-X End User Utility tool, described in section 4.2.1 may be of interest.

The top of a CLC Network License Manager log file is shown below. This example information is from a license manager running on Windows, but the output looks similar on all platforms. In this case, two license files were found in the `licenses` folder, and two licenses are available, one for the CLC Genomics Workbench and one for the CLC Main Workbench.

```
[2022-03-07 14:14:50] LM-X License Server v5.2.2 build <buid id> on on <..host info..> (<platform info>)
[2022-03-07 14:14:50] Copyright (C) 2002-2022 X-Formation. All rights reserved.
[2022-03-07 14:14:50] Website: https://www.lm-x.com https://www.x-formation.com
[2022-03-07 14:14:50] License server has pid <pid>.
[2022-03-07 14:14:50] Serving licenses for vendor CLCBIO.
[2022-03-07 14:14:50]
[2022-03-07 14:14:50] License server using TCP IPv4 port 6200.
[2022-03-07 14:14:50] License server using TCP IPv6 port 6200.
[2022-03-07 14:14:50] License server using UDP IPv4 port 6200.
[2022-03-07 14:14:50] Reading licenses...
[2022-03-07 14:14:50] License file(s):
[2022-03-07 14:14:50] C:\Program Files\CLCNetworkLicenseManager5\licenses\CLC-NETWORKLICENSE-xxxxx-xxxxx-xxxxx
[2022-03-07 14:14:50] C:\Program Files\CLCNetworkLicenseManager5\licenses\CLC-NETWORKLICENSE-xxxxx-xxxxx-xxxxx
[2022-03-07 14:14:50] C:\Program Files\CLCNetworkLicenseManager5\licenses\CLC-NETWORKLICENSE-xxxxx-xxxxx-xxxxx
[2022-03-07 14:14:50] Reservation for clcmainwb is set to 1 license(s) for user(s) bob.
[2022-03-07 14:14:50] Reservation for clcgenomicswb is set to 1 license(s) for user(s) bob, mary.
[2022-03-07 14:14:50] Log file path: C:\Program Files\CLCNetworkLicenseManager5\licenseserver.log
[2022-03-07 14:14:50] Log to stdout: Yes
[2022-03-07 14:14:50] Log format: Normal
[2022-03-07 14:14:50] Configuration file path: C:\Program Files\CLCNetworkLicenseManager5\licenseserver.cfg
[2022-03-07 14:14:50] Serving following features:
[2022-03-07 14:14:50] CLCGENOMICSWB (v22.99) (1 license(s)) license type: exclusive
[2022-03-07 14:14:50] CLCMAINWB (v22.99) (1 license(s)) license type: exclusive
[2022-03-07 14:14:50] CLC_GENOMICS_PREMIUM_MODULES (v22.99) (1 license(s)) license type: exclusive
[2022-03-07 14:14:50]
[2022-03-07 14:14:50] To administrate the license server go to your enduser directory and run the License Serv
[2022-03-07 14:14:50] Ready to serve...
```

Chapter 5

Configuring Workbenches to use network licenses

Configuring a CLC Workbench to connect to the CLC Network License Manager is done using the Workbench's License Manager.

Once configured, the information about how to connect to the CLC Network License Manager is stored in a file called *license.properties* under the settings directory in the installation area of the Workbench (e.g. C:\Program Files\CLC Main Workbench 24\settings\license.properties).

To configure a Workbench to connect to a *CLC Network License Manager*, select the **Configure license manager connection** option and click on the **Next** button. A dialog appears, as shown in figure 5.1.

The options in that dialog are:

- **Enable license manager connection.** This box must be checked for the Workbench is to contact the *CLC Network License Manager* to get a license for the CLC Workbench.
- **Automatically detect license manager.** By checking this option the Workbench will look for a *CLC Network License Manager* accessible from the Workbench. Automatic server discovery sends UDP broadcasts from the Workbench on port 6200. Available license servers respond to the broadcast. The Workbench then uses TCP communication for to get a license, if one is available. Automatic server discovery works only on local networks and will not work on WAN or VPN connections. Automatic server discovery is not guaranteed to work on all networks. If you are working on an enterprise network on where local firewalls or routers cut off UDP broadcast traffic, then you may need to configure the details of the *CLC Network License Manager* using the **Manually specify license manager** option instead.
- **Manually specify license manager.** Select this option to enter the details of the machine the *CLC Network License Manager* is running on, specifically:
 - **Host name.** The address of the machine the *CLC Network License Manager* is running on.
 - **Port.** The port used by the *CLC Network License Manager* to receive requests.
- **Use custom username when requesting a license.** Optional. When unchecked (the default), the username of the account being used to run the Workbench is the username used when

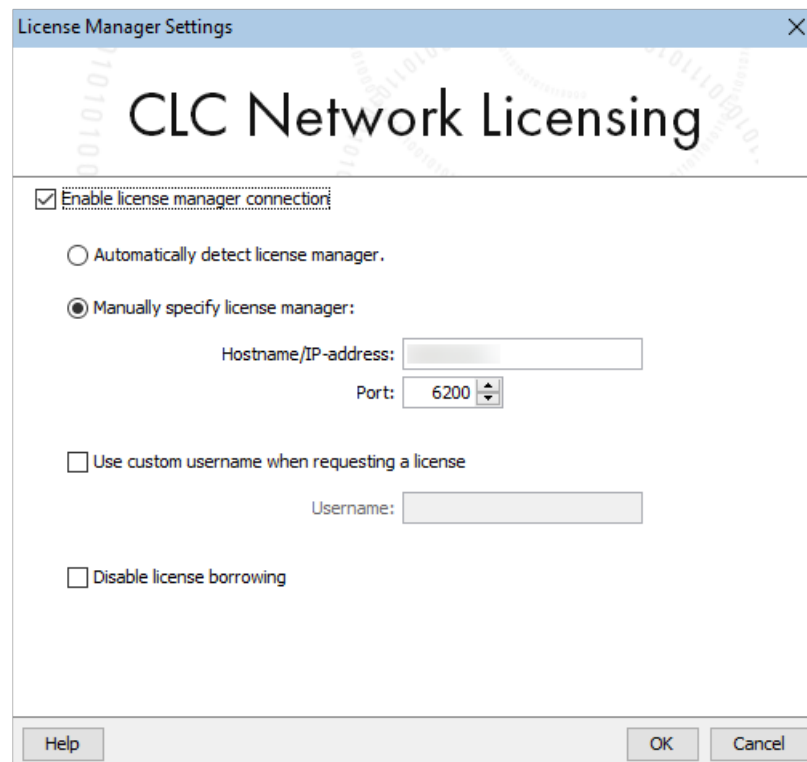


Figure 5.1: Configuring the connection to a CLC Network License Manager.

contacting the license manager. When this option is checked, a different username can be entered for that purpose. Note that borrowing licenses is not supported with custom usernames.

- **Disable license borrowing on this computer.** Check this box if you do not want users of this Workbench to borrow a license. See section 5 for further details.

Releasing Workbench network licenses

Once a network license for a *CLC Workbench* has been obtained, the Workbench must be shut down to release that license for others to use. While it is possible for a license to be pulled from a running Workbench, in practice, that Workbench will immediately retrieve the license just released.

Modules and network licenses

A relevant license is needed to run tools delivered by modules, and to submit jobs to be run on the cloud via a *CLC Workbench*.

To maximize availability, module licenses are first checked out when a job requiring the module is undertaken. Module licenses are checked back in (returned) when the *CLC Workbench* is closed, or four hours after the most recent job requiring that license was launched, whichever is shortest.

Job completion does not depend on the *CLC Workbench* having a module license checked out.

A note about borrowing module licenses: If you plan to borrow network module licenses and the

CLC Network License Manager will not be continuously accessible from the *CLC Workbench*, then while there is still a connection, launch a job that requires the relevant module. If available, the relevant license will be checked out, and can then be borrowed. When a module license is borrowed, the four hour validity period mentioned above is not relevant. The module licenses are borrowed for the time period that you specify.

Borrowing a license

A *CLC Workbench* using a network license normally needs to maintain a connection to the *CLC Network License Manager*. However, if allowed by the network license administrator, network licenses can be *borrowed* for offline use for a period of time. While the license is borrowed, there is one less network license available for other users. Borrowed licenses can be returned early.

The Workbench must be connected to the *CLC Network License Manager* at the point when the license is borrowed or returned. The procedure for borrowing a license is:

1. Go to the Workbench menu option:

Help | License Manager...

2. Click on the "Borrow License" tab to display the license borrowing settings (figure 5.2).

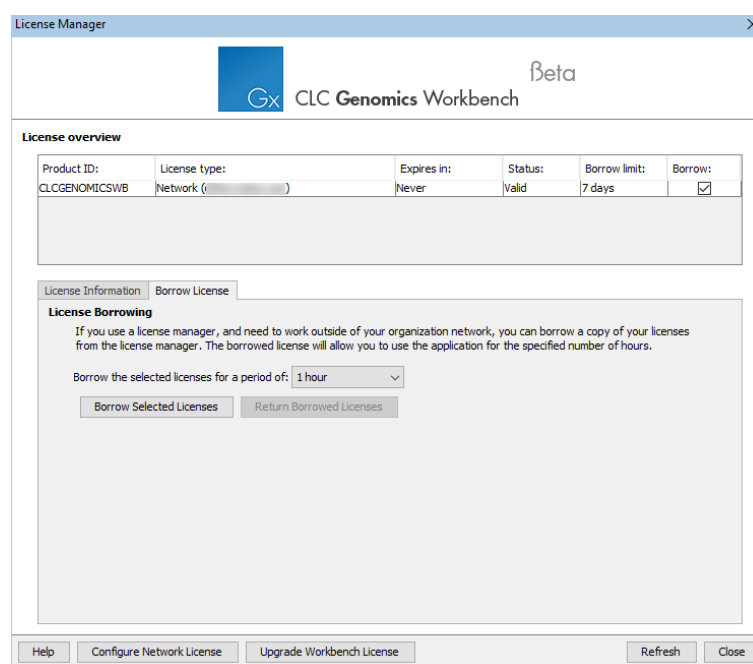


Figure 5.2: Borrowing a license from a *CLC Network License Manager*.

3. Select the license(s) that you wish to borrow by clicking in the checkboxes in the Borrow column in the License overview panel.

If you plan to borrow module licenses but they are not listed, start a job that requires that module. This will check out the relevant module license, so that it becomes available to borrow.

4. Choose the length of time you wish to borrow the license(s) for using the drop down list in the Borrow License tab. By default the maximum is 7 days, but network license administrators can specify a lower limit than this.
5. Click **Borrow Selected Licenses**.
6. Close the License Manager when you are done.

You can now go offline and continue working with the CLC Workbench. When the time period you borrowed the license for has elapsed, the network license will be again made available for other users. To continue using CLC Workbench with a license, you will need to connect to the network again so the Workbench can request another license.

You can return borrowed licenses early opening up the **License Manager**, going to the "Borrow License" tab, and clicking on the **Return Borrowed Licenses** button.

Common issues when using a network license

Some issues that may be experienced when using network licenses are:

- No license is available at that point in time.
If all licenses for your product are in use, a message saying "No license available at the moment" will appear (figure 5.3).

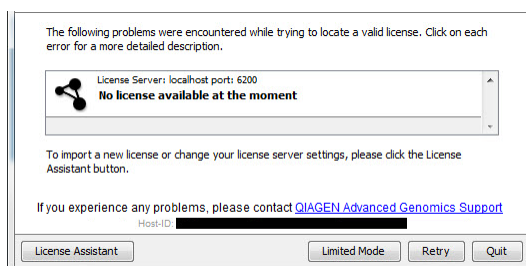


Figure 5.3: When there are no available network licenses for the software, a message appears to indicate this.

After at least one license is returned to the pool, you will be able to run the software and get the necessary license. If running out of licenses is a frequent issue, you may wish to discuss this with your administrator.

Data can be viewed, imported and exported, and very basic analyses launched, by running the Workbench in Viewing Mode. Click on the **Viewing Mode** button in that dialog to launch the Workbench in this mode.

- The connection to the CLC Network License Manager is lost.
If the Workbench connection to the *CLC Network License Manager* is lost, you will see a dialog like that shown in figure 5.4.
If you have chosen the option to **Automatically detect license manager** and you have not succeeded in connecting to the *CLC Network License Manager* before, please check with your local IT support that automatic detection is possible at your site. If it is not, you will need to specify the settings, as described earlier in this section.

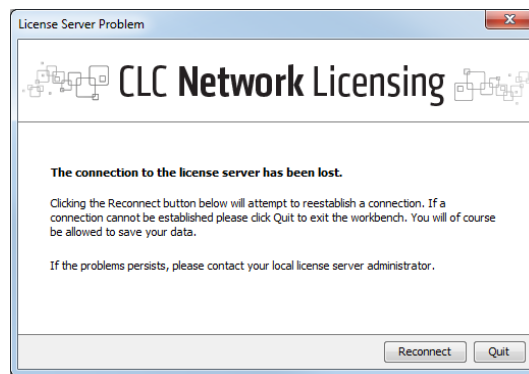


Figure 5.4: *This Workbench was unable to establish a connection to obtain a network license.*

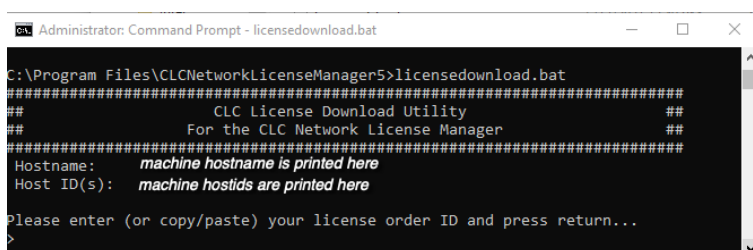
If you have successfully contacted the *CLC Network License Manager* from your Workbench previously, please contact your local administrator. Common issues include that the *CLC Network License Manager* is not running or that network details have changed.

Appendix A

License download

A.1 Download license files for Windows

On a networked machine, license files can be downloaded by running the `licensedownload.bat` script with administrator privileges. To do this, view the contents of the CLC Network License Manager installation directory, and right-click on the `licensedownload.bat` file. Choose the option **Run as administrator** from the context menu.



```
Administrator: Command Prompt - licensedownload.bat
C:\Program Files\CLCNetworkLicenseManager5>licensedownload.bat
#####
##          CLC License Download Utility          ##
##          For the CLC Network License Manager    ##
#####
Hostname:    machine hostname is printed here
Host ID(s):  machine hostids are printed here

Please enter (or copy/paste) your license order ID and press return...
>
```

Figure A.1: Enter a License Order ID at the prompt to download a license.

Paste in the Order ID supplied by QIAGEN at the prompt.

When you run the `licensedownload.bat` script, a new license file is downloaded into the `licenses` folder, which is under the installation area of the CLC Network License Manager software. This is where the CLC Network License Manager looks for licenses by default.

If the license manager is already running, you need to restart it for the new licenses to be loaded. You can restart the service through the Services control panel, as shown in figure 2.2. It can also be restarted by right-clicking on the `restartservice` script and choosing the option **Run as administrator**.

To download and install a license file on a non-networked machine, please see section A.4.

Upgrading an existing license: If you are *upgrading* an existing license file, then it is very important that old license files, that is, the ones you are replacing, are deleted before the CLC Network License Manager is restarted. The old file(s) can be removed before or after you download the new license file(s).

If you have not received a license order ID or there are problems with your license order ID, please contact bioinformaticslicense@qiagen.com.

A.2 Download license files for macOS

Downloading and installing licenses on a machine with the CLC Network License Manager installed and with access to the external network is described in this section. To download and install a license file on a system without access to the external network, please see section A.4.

To download and install licenses in the CLC Network License Manager on a machine with access to the external network:

1. Run the `downloadlicense.command` script, found in the CLC Network License Manager installation area. Usually this will need to be done as a user with administrator privileges.

For example, if the default installation location for the CLC Network License Manager was used, the following command could be run:

```
sudo /Applications/CLCNetworkLicenseManager5/downloadlicense.command
```

This script launches a terminal window, where you are prompted to supply a license order ID.

2. Paste in the license order ID supplied by QIAGEN and press Enter.

A new license file is downloaded into the `licenses` folder of the installation area of the CLC Network License Manager software. This is where the CLC Network License Manager looks for licenses by default. The location of the file is printed to the terminal.

3. To load the new license information, the CLC Network License Manager service must be started up, or re-started if it is already running. See section 2.2.5 for details about how to do this.

Upgrading an existing license: If you are *upgrading* an existing license file, then it is very important that old license files, that is, the ones you are replacing, are deleted before the CLC Network License Manager is restarted. The old file(s) can be removed before or after you download the new license file(s).

If you have not received a license order ID or there are problems with your license order ID, please contact bioinformaticslicense@qiagen.com.

A.3 Download license files for Linux

On a networked machine, license files can be downloaded using the `downloadlicense` script with administrator privileges. For example, if the default installation location for the CLC Network License Manager was used, the following command could be run:

```
sudo /opt/CLCNetworkLicenseManager5/downloadlicense
```

Paste in the license order ID supplied by QIAGEN and press Enter.

A new license file is downloaded into the `licenses` folder, which is under the installation area of the CLC Network License Manager software. This is where the CLC Network License Manager looks for licenses by default. The location of the license file is printed to the terminal.

If the license manager is already running, it must be restarted for new licenses to be loaded.

To download and install a license file on a non-networked machine, please see section A.4.

Upgrading an existing license: If you are *upgrading* an existing license file, then it is very important that old license files, that is, the ones you are replacing, are deleted before the CLC Network License Manager is restarted. The old file(s) can be removed before or after you download the new license file(s).

If you have not received a license order ID or there are problems with your license order ID, please contact bioinformaticslicense@qiagen.com.

A.4 Download license files on non-networked machines

The license download tools distributed with the CLC Network License Manager assume the machine the tool is running on has access to the external network. This section outlines how to download a license when this is not the case.

Please make sure you have your license order ID before you start the below process.

1. Find the host ID of the machine that will run the CLC Network License Manager software by running the license download script located in the installation area of the software. The relevant script name for each OS is:
 - On Linux: downloadlicense
 - On macOS: downloadlicense.command
 - On Windows: licensedownload.bat

Note down the host ID.

2. Go to a computer with internet access, open a browser window and go to the network license download web page
<https://secure.clcbio.com/LmxWSv3/GetNetworkLicenseFile>
3. Paste in your license order ID and the host ID noted down earlier.
4. Click on the 'Download License' button and save the resulting .lic file.
5. Copy this file onto the machine with the CLC Network License Manager software installed, placing it in the folder called `licenses` in the CLC Network License Manager installation directory.
6. Restart the CLC Network License Manager by following instructions in the "Downloading Licenses" section of this manual pertinent to the operating system you are running the CLC Network License Manager on.

We recommend that all license files are placed in the `licenses` subfolder of the installation directory. This location is used by default by the CLC Network License Manager without requiring further configuration.

If license files are placed elsewhere their locations must be configured. See section 3 for further details.

Upgrading an existing license: If you are *upgrading* an existing license file, then it is very important that old license files, that is, the ones you are replacing, are deleted before the

CLC Network License Manager is restarted. The old file(s) can be removed before or after you download the new license file(s).

If you have not received a license order ID or there are problems with your license order ID, please contact bioinformaticslicense@qiagen.com.

Appendix B

Feature names

Feature names are used when configuring the CLC Network License Manager to limit or restrict access to licenses for particular products. The feature names supported by your network licenses can be found by running the `Imxendutil` command as described in section [4.2.1](#)

Feature names for some of our supported products

Product name	Feature name for configuration purposes
CLC Genomics Workbench	CLCGENOMICSWB
CLC Main Workbench	CLCMAINWB
CLC Premium Modules (21.x and later)	CLC_GENOMICS_PREMIUM_MODULES
CLC Cloud Module	CLC_CLOUD_MODULE
CLC MLST Module	CLCMLSTMODULE

Feature names for products that are no longer under support

Product name	Feature name for configuration purposes
CLC Assembly Cell	ASSEMBLY_CELL
CLC Genome Finishing Module (20.x and earlier)	CLC_MICROBIAL_GENOME_FINISHING_MODULE
CLC Microbial Genomics Module (20.x and earlier)	CLC_MICROBIAL_GENOMICS_MODULE

If a licensed product you are interested in is not listed in either of the tables above and you have not been able to determine it using the `Imxendutil`, as described in section [4.2](#), please contact us at

ts-bioinformatics@qiagen.com.

Index

- Access restrictions, 21
- Auto-discover, firewall problems, 7
- Borrow
 - disable, 24
 - limit number, 25
 - limit time, 26
 - restrictions, 24
- Borrow Workbench network license, 31
- Command-line installation, 17
- Configuration, 20
- Feature names, 40
- Firewall settings, 7
- Host name, restrict access, 21
- Installation, 8
- IP addresses, restrict access, 21
- License access
 - limiting, 40
 - per product configuration, 40
 - restricting, 40
- License download
 - Linux, 37
 - macOS, 37
 - non-networked machine, 38
 - Windows, 36
- License file, path to, 20
- License server: use Workbench license offline, 31
- Linux
 - download licence file, 15, 37
 - installation on, 12
 - server requirements, 6
- Log file
 - exclude certain message types, 21
 - general information, 29
 - get XML output, 29
 - path to, 21
- macOS
 - download licence file, 11, 37
 - installation on, 10
 - server requirements, 6
- Monitor license manager, 27
- Network license: use Workbench offline, 31
- Network requirements, 7
- Offline access to a license, 24
- Overview
 - setup, 7
- Password for remote access, 21
- Quiet installation, 17
- Requirements
 - network, 7
 - server, 6
- Restrictions
 - access, 21
 - borrowing, 24
 - reserving licenses, 24
- Server requirements, 6
- Silent installation, 17
- Statistics
 - license usage, 27
- Status
 - checking, general, 27
 - graphs, 27
 - Linux, systemd, 16
 - macOS, 12
 - Windows, 9
- Subnet, restrict access, 21
- System requirements, 6
- TCP port, specify, 20
- TCP, server firewall settings, 7
- UDP port number, 7
- Upgrading, 18

Usage information, [27](#)

Usage, view, [29](#)

Username, restrict access, [21](#)

VPN connection, [7](#)

Windows

- download licence file, [9](#)

- installation on, [8](#)

- server requirements, [6](#)

Workbenches, connecting from, [31](#)

Working offline, [24](#)

XML output for usage statistics, [29](#)