



CLC **Bioinformatics Database**

End User

USER MANUAL

Manual for
CLC Bioinformatics Database 4.7
Windows, Mac OS X and Linux

November 3, 2016

This software is for research purposes only.

QIAGEN Aarhus
Silkeborgvej 2
Prismet
DK-8000 Aarhus C
Denmark



Contents

1 Introduction	4
2 Using the server from a CLC Workbench	6
2.1 Installing relevant plugins in the Workbench	6
2.2 Log into the server	6
2.3 Browsing and searching data from the workbench	7
2.3.1 Deleting data	8
3 Using a web browser as client	9
3.1 Browsing and searching data	9
3.2 Import and export	10

Chapter 1

Introduction

Welcome to *CLC Bioinformatics Database 4.7*, a central element of the CLC product line enterprise solutions. This manual describes how to access data in stored in a CLC Bioinformatics Database.

The latest version of the user manual can also be found in pdf format at <http://www.clcbio.com/usermanuals>.

You can get an overview of the server solution in figure [1.1](#). The software depicted here is for research purposes only.



Figure 1.1: An overview of the server solution from CLC bio. Note that not all features are included with all license models.

Chapter 2


Using the server from a CLC Workbench

2.1 Installing relevant plugins in the Workbench

To access data in the *CLC Bioinformatics Database* from a CLC Workbench, you need to install the CLC Workbench Client Plugin in the Workbench. This will allow you to log in and access data from the *CLC Bioinformatics Database* data locations.

Plugins are installed in a Workbench using the Plugins Manager¹, which can be accessed via the menu in the Workbench

Help | Plugins... ()

or via the **Plugins ()** button on the Toolbar.

From within the Plugins manager, choose the Download Plugins tab and click on the relevant plugin or module. Then click on the button labeled **Download and Install**.

If you are working on a system not connected to the internet, then you can also install the plugin or module by downloading the cpa file from the plugins page of our website

<http://www.clcbio.com/clc-plugin/>

Then start up the Plugin manager within the Workbench, and click on the button at the bottom of the Plugin manager labeled **Install from File**.

You need to restart the Workbench before the plugin is ready for use.

2.2 Log into the server

Once the plugin is installed, log into the server:

File | CLC Server Login ()

That will bring up a login dialog as shown in figure 2.1).

The first time you log into the server, you have to expand the dialog by clicking **Advanced**. That will allow you to enter the host and port for the server as shown in figure 2.2).

¹In order to install plugins on many systems, the Workbench must be run in administrator mode. On Windows Vista and Windows 7, you can do this by right-clicking the program shortcut and choosing "Run as Administrator".

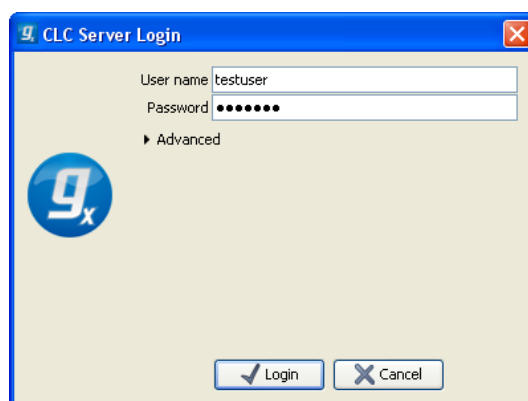


Figure 2.1: Expand the login dialog by clicking Advanced.

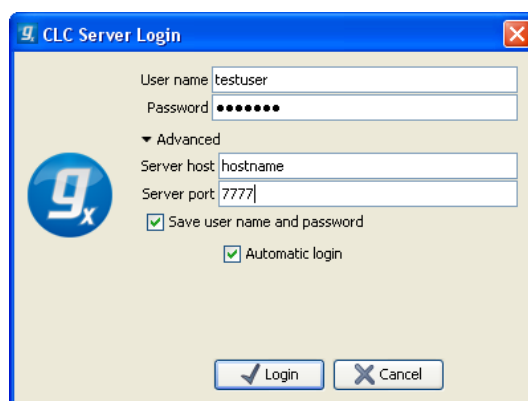


Figure 2.2: Specifying host and port.

In addition you can choose to save user name and password and automatically log into the server when the Workbench starts.

Note that you need to get the login information from your server administrator.

When you press **Login**, the Workbench connects to the server. You will see a progress bar in the login dialog. If the login is successful, the dialog will disappear, and you will be able to use the server as described below.

2.3 Browsing and searching data from the workbench

Once you are logged in, the data locations on the server are shown in the **Navigation Area** (Figure 2.3).

Once logged in, the server data locations can be used in the same way as local data locations. We refer to the user manual of the Workbench for information about using the **Navigation Area** (click the location and press **F1** on the keyboard to get context help).

You may also wish to have a look at the search chapter, *Searching your data*, in the workbench user manual (press F1 and look for *Searching your data*).

It is possible to have both local and server locations added at the same time. This means that you can work on e.g. temporary sequences located on your own computer and then when you have more complete results, you can drag the elements to a folder in the server location.

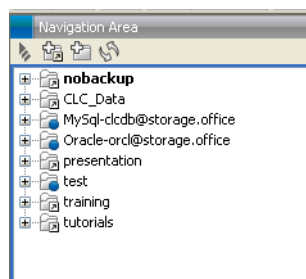


Figure 2.3: Three server locations on the server appears in the Navigation Area (marked with blue dots). The remaining five local folders are file locations in the Workbench that are independent of the server.

Note that when logged in a *CLC Bioinformatics Database* with a *Biomedical Genomics Server Extension*, you will have in your Navigation Area two folders called *CLC_References*. The blue dot indicates which of these repositories is installed on the server.

2.3.1 Deleting data

When you delete data located on the server, it will be placed in the **Recycle bin** (🗑️) in the same way as when you delete data located on the Workbench. The data in the recycle bin can only be accessed by you and the server administrator.

Please note that the server administrator might have configured the recycle bin to be automatically emptied at regular intervals.

Chapter 3

Using a web browser as client

Besides using the CLC Workbench as a client, you also have access to the server from the web interface. The web interface gives you access to browsing and searching data and importing and exporting data.

Simply type the address of the server into your browser, followed by the port number, and you will see a login dialog similar to what is shown in figure 3.1 (you will need to get information from your server administrator about the server address).

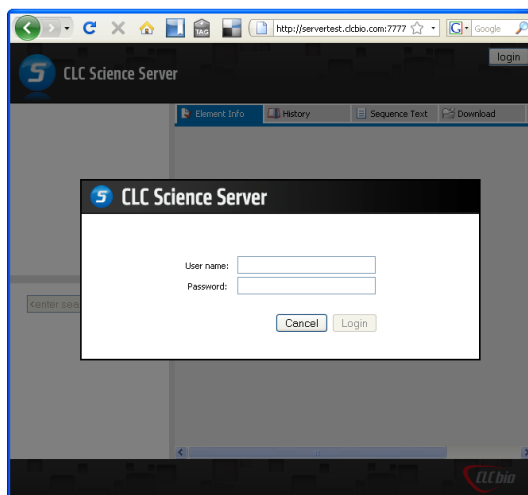


Figure 3.1: The web interface of the server.

3.1 Browsing and searching data

To the left, you will see the data locations connected to the server. You can browse the folder hierarchy of the data location. When you click an element in the tree, a number of options are available:

- Click the **Element Info** (📄) tab to see the properties of this element. Note that you can edit the information in this view.
- Click the **History** (🕒) tab to see the history of this element.

- Click the **Sequence Text** (📄) tab to see a textual representation of this element (only works for sequences)

An example of a protein sequence in the text view is shown in figure 3.2.

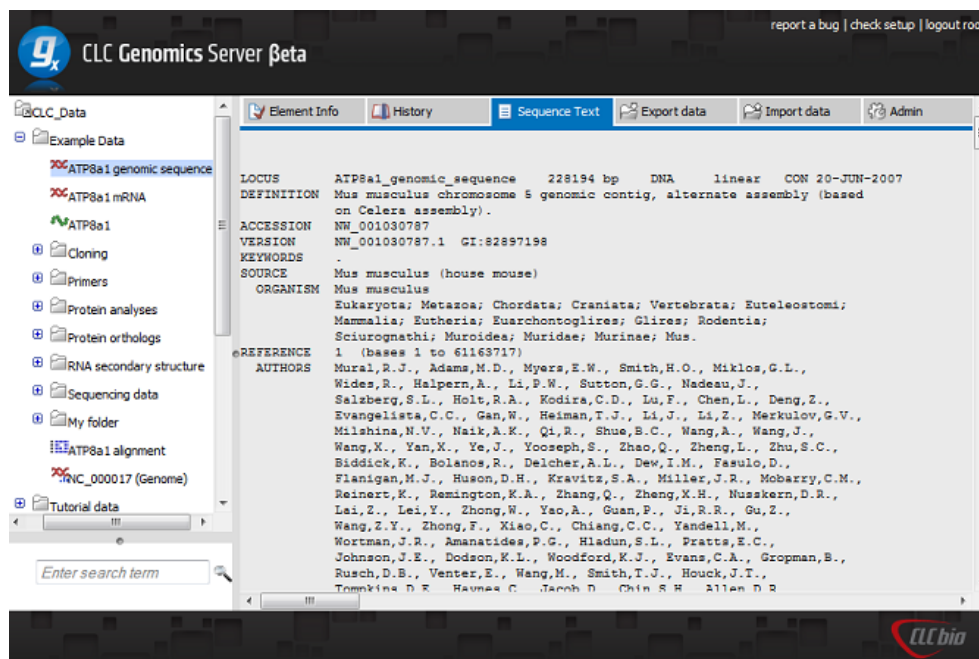


Figure 3.2: Inspecting the text view of a protein sequence.

Note that these views are a subset of the views that you find in the CLC Workbench.

3.2 Import and export

It is possible to import from and export to the server. If you wish to import data from the server, click **Import** (📁) and select the relevant data. Leave the file import format to 'Automatic' and press the 'Import File' button (figure 3.3).

You can also put data into the import/export directories: Select the data you wish to export and click **Export** (📁). Next, tick 'Save on server' and select the folder where you want the data to be (see figure 3.4).

Click the button labeled **Export**. The server will automatically recognize the file format and interpret the file.

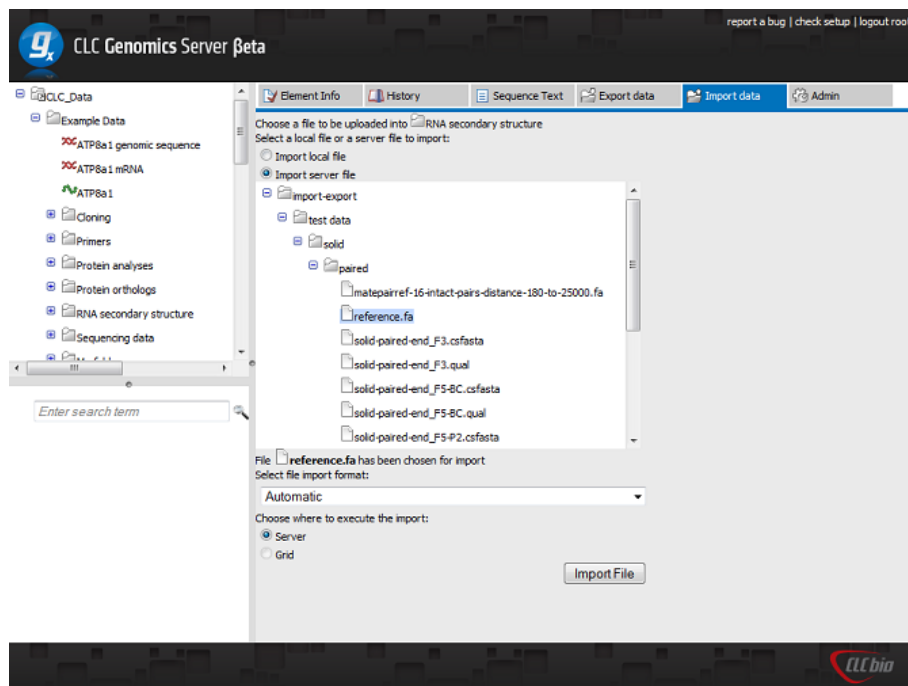


Figure 3.3: Importing a sequence from the server.

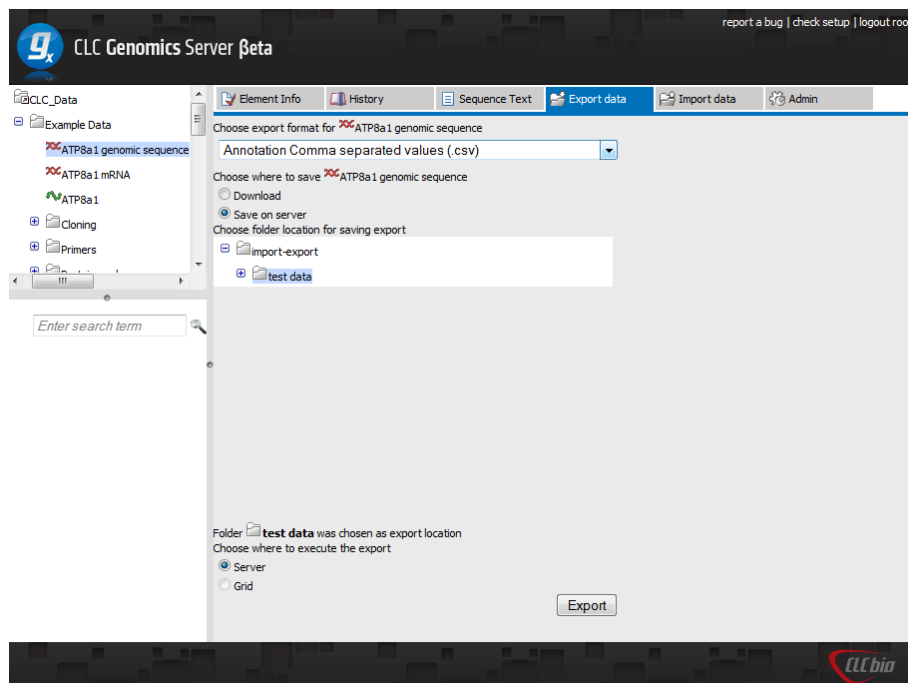


Figure 3.4: Exporting sequences to the server.